

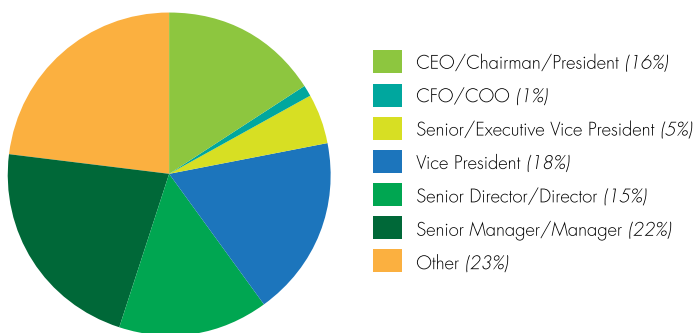
PAPER2012

WHERE THE INDUSTRY MEETS
MARCH 25-27 NEW YORK

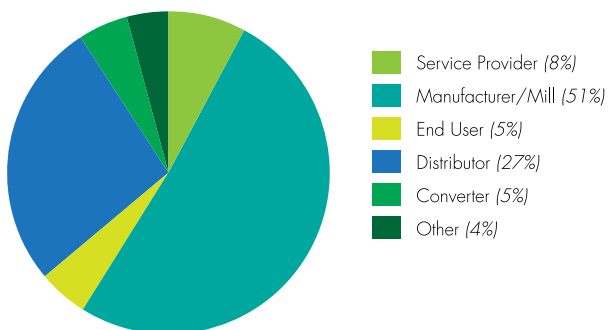
OFFICIAL PAPER2012 SUITES

Count on Paper2012 to bring together the leading players from across the industry — manufacturers, distributors, converters, end users, and service providers — for three days of informative programming and unparalleled networking opportunities. An Official Paper2012 Suite will provide you a centrally located, widely promoted venue to engage with new contacts and strengthen relationships with existing customers and suppliers.

Attendee Profile by Title (based on past events)



Attendee Profile by Sector (based on past events)



Official Paper2012 Suites include:

- Specially discounted suite and room rates
- 10% banquet discount on suite food and beverage
- Hosted table at Speed Networking Session
- Listing in Official Paper2012 Suite Directory
- Logo and link on Paper2012.com website prior to, during, and after event
- Opportunity to distribute marketing materials in Paper2012 Registration Area
- Paper2012 attendee list

Customized to your needs

Official Paper2012 Suites at The Ritz-Carlton New York, Battery Park and Conrad New York host hotels are available at a variety of sizes and price points. These suites may be reserved as part of one of three packages designed to deliver maximum value. Each includes the benefits listed above, plus:

Elite Package (room rate + \$6,500)

- 10 Full Convention Registrations
- 10 tickets (a full table) and priority seating for the Paper2012 luncheon
- 12 Limited Access Passes
- 70% discount on additional Limited Access Passes (groups of 10)
- Priority access to suite selection for Paper2013

Premium Package (room rate + \$5,000)

- 5 Full Convention Registrations
- 5 tickets to the Paper2012 luncheon
- 8 Limited Access Passes
- 50% discount on additional Limited Access Passes (groups of 10)

Standard Package (room rate + \$3,750)

- 2 Full Convention Registrations
- 4 Limited Access Passes
- 20% discount on additional Limited Access Passes (groups of 10)

Full Convention Registration (\$275 value)

- Access to Paper2012 event hotels and suites
- Access to Paper2012 Registration Area
- Admission to Paper2012 Opening Session
- Admission to Speed Networking Session
- Admission to RISI Paper Industry Trends & Forecast Session

Limited Access Pass (\$75 value)

- Access to Paper2012 event hotels and suites
- Access to Paper2012 Registration Area

About Paper2012

Paper2012 will be held March 25-27 in New York City's newly reinvigorated downtown area, steps from the World Trade Center site. A partnership between the American Forest & Paper Association and NPTA Alliance, Paper2012 is sure to attract senior executives and top decision makers from leading manufacturers and distributors.

To see the latest information on the exciting programs planned for Paper2012, visit www.Paper2012.com. Suite hours are built right into the schedule:

- Sunday from 4-6pm
- Monday from 11am-6pm
- Tuesday from 9am-12noon and 2:30-6pm

The value of making it "Official"

Only purchasers of Official Paper2012 Suites will be included in the various event directories — both printed and online — distributed before, during and after Paper2012. Furthermore, the Paper2012 host hotels have the largest pool of suites available to meet the needs of Paper2012 participants, combining competitive pricing and unrivaled convenience.

- Increased ease for your distributors and end-user customers to meet with you.
- Easy access to Paper2012 Registration Area, programming, and social functions.
- Easy access to AF&PA sector meetings and NPTA committee meetings.

About AF&PA

The American Forest & Paper Association is the national trade association of the forest products industry, representing pulp, paper, packaging and wood products manufacturers, and forest landowners. AF&PA member companies make products essential for everyday life from renewable and recyclable resources that sustain the environment. The forest products industry employs nearly 900,000 workers and accounts for approximately 5 percent of the total U.S. manufacturing GDP.



**American
Forest & Paper
Association**

1111 Nineteenth St., NW, Ste. 800
Washington, DC 20036
Toll Free: 800.878.8878
Tel: 202.463.2700
Fax: 202.463.2708
E-mail: paper2012@afandpa.org
Website: www.afandpa.org

About NPTA Alliance

NPTA Alliance (formerly the National Paper Trade Association, Inc.), founded in 1903, is the association for the \$60+ billion paper and packaging distribution industry. The mission of NPTA is to actively support the success of its members through the delivery of networking, education, industry data, research and advocacy, which focuses on the health of the distribution channel.



401 N. Michigan Ave., Ste. 2200
Chicago, IL 60611
Toll Free: 800.355.NPTA (6782)
Tel: 312.321.4092
Fax: 312.673.6736
E-mail: NPTA@goNPTA.com
Website: www.goNPTA.com

Reserve your Official Paper2012 Suite today!

Contact Nicole Boland, Sales Manager, at 312.673.5828, or by e-mail at Nicole.Boland@goNPTA.com with any questions.

The Ritz-Carlton New York, Battery Park (Host Hotel)

	Daily Room Rate	Square Footage	Reception Capacity	Meeting Capacity
Deluxe Executive Suite	\$530	800	20	10
Statue of Liberty View Executive Suite	\$580	700	20	10
Liberty Suite	\$950	1,125	30	20
The Ritz-Carlton Suite	\$3,500	2,500	40	20

Conrad New York

	Daily Room Rate	Square Footage	Reception Capacity	Meeting Capacity
Superior & Deluxe Suite	\$349	430	10	5-6
Deluxe One Bedroom Suite	\$549	700	15	6-7
Luxury One Bedroom Suite	\$599	735	15	6-7
Two Bedroom Suite	\$699	860	20	5-6 per room
Presidential Suite	\$2,500	1,200	25-30	6-8 per room